

ExxonMobil

2021 Worldwide Contributions and Community Investments

ExxonMobil's community investments are intended to address strategic local priorities where we do business around the world. We partner with governments, other companies and nongovernmental organizations to help support communities where we operate. We focus on community and business needs such as health care, education and economic development, and we consider each community's development goals when deciding how best to invest. We often participate in public-private partnerships and engage with key stakeholders to help improve social and economic conditions.

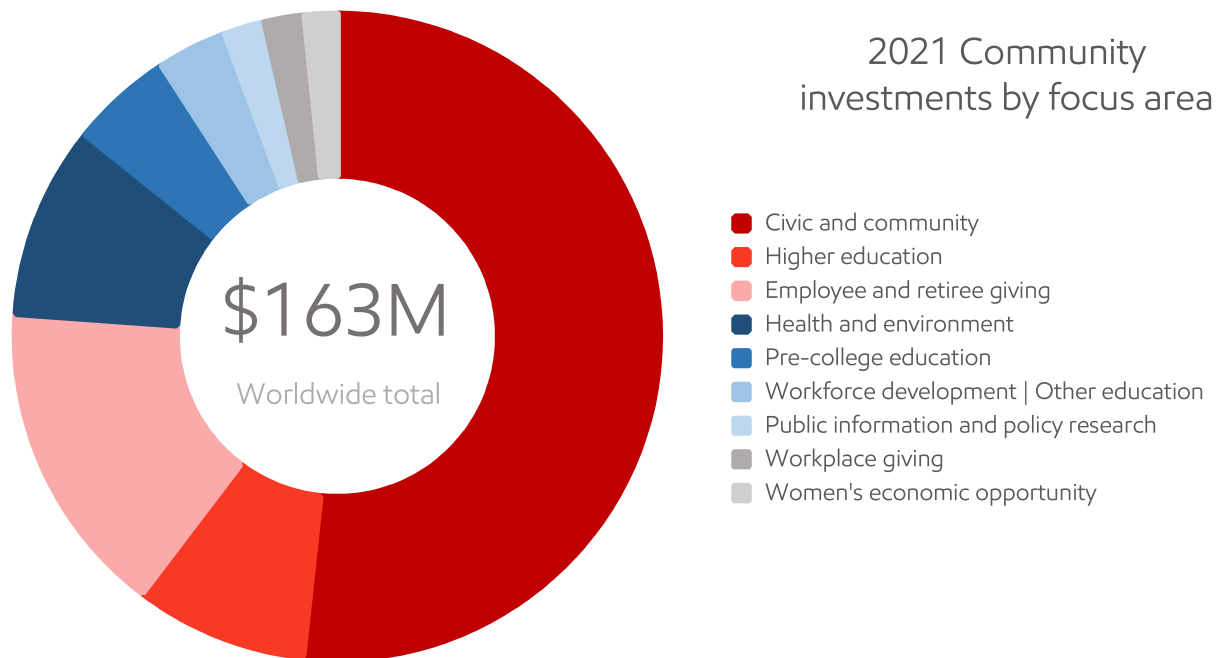
Total contributions include donations from Exxon Mobil Corporation, our divisions and affiliates, and the ExxonMobil Foundation, as well as employee and retiree giving through ExxonMobil's matching gift and employee-giving programs.

In 2021, collectively, Exxon Mobil Corporation, its divisions and affiliates, employees and retirees, and the ExxonMobil Foundation provided \$163 million in contributions worldwide. Of that total, \$34 million supported U.S. communities and \$103 million supported communities in other countries. In addition, ExxonMobil employees and retirees donated \$26 million through ExxonMobil's matching gift and employee-giving programs.

Our employees are involved in local communities by helping build homes, serving as volunteer firefighters and providing pro bono legal services, among numerous other activities. Through company-sponsored volunteer programs, 3,900 ExxonMobil employees, retirees and their families donated more than 135,000 volunteer hours in 2021 to over 1,450 charitable organizations across 19 countries.

This report highlights ExxonMobil's 2021 worldwide corporate contributions and community investments. Organizations in the United States that received grants of \$100,000 or more are listed while investments outside the United States are summarized. The total amounts include all corporate contributions and community investments less than, equal to and greater than \$100,000.

2021 Community investments by focus area



Total contributions include donations from Exxon Mobil Corporation, our divisions and affiliates, and the ExxonMobil Foundation, as well as employee and retiree giving through ExxonMobil's matching gift and employee-giving programs. Investments do not include environmental capital and operating expenditures.

Civic and Community

Albuquerque International Balloon Fiesta, Albuquerque, N.M.	
General support	350,000
American Red Cross, Dallas, Texas	
Hurricane Ida disaster relief	250,000
ExxonMobil Volunteer Involvement Program*	
ExxonMobil Volunteer Involvement Program	2,090,000
Feeding America, Chicago, Ill. *	
General support	100,000
National Minority Supplier Development Council, New York, N.Y.	
Conference/Leadership Week Sponsorship	100,000
Rebuilding Together Houston, Houston, Texas*	
Winter Storm Uri disaster relief	100,000
Smithsonian Institution, Washington, D.C.	
Green Book Traveling Exhibition (\$850,000: 2019-2021)	200,000
Team Rubicon, El Segundo, Calif. *	
General support	100,000
Contributions Benefiting Communities in the United States	\$ 6,158,300
Contributions Benefiting Communities outside the United States	\$ 78,374,603
Total Worldwide Civic and Community Contributions	\$ 84,532,903
Exxon Mobil Corporation	\$ 82,072,903
ExxonMobil Foundation*	\$ 2,460,000
Total Civic and Community	\$ 84,532,903

Education – Higher Education

ExxonMobil Educational Matching Gift Program*

Auburn University Foundation	271,710
Baylor University	194,525
Brigham Young University	135,610
Clemson University Foundation	145,176
Georgia Tech Foundation Inc.	177,310
Kansas University Endowment Association	161,808
Louisiana State University Foundation	227,586
Massachusetts Institute of Technology	155,535
Mississippi State University	142,095
Oklahoma State University	181,170
Pennsylvania State University	169,015
Purdue Foundation	123,656
Rice University	312,814
Texas A&M University	509,871
University of Florida Foundation	147,907
University of Houston Foundation	214,429
University of Illinois	100,746
University of Notre Dame	150,172
University of Oklahoma	128,521
University of Texas at Austin	648,205
643 other colleges and universities, each under \$100,000	6,746,636
Subtotal	\$ 11,044,496

Departmental Grants

48 colleges and universities, each under \$100,000	380,000
Hispanic Heritage Awards Foundation, Washington, D.C.	
Awards and Latinos On Fast Track	100,000
National Action Council for Minorities in Engineering, Alexandria, Va. *	
General support	100,000
Society of Women Engineers, Chicago, Ill. *	
Engineering outreach	100,000
Southeastern Consortium for Minorities in Engineering, Atlanta, Ga. *	
SECME Consortium	100,000
University of Texas at Austin, Austin, Texas	
Engineering outreach	100,000
Construction Industry Institute research initiative	500,000

Contributions Benefiting Communities in the United States	\$ 12,889,846
Contributions Benefiting Communities outside the United States	\$ 1,213,024

Total Worldwide Higher Education Contributions	\$ 14,102,870
---	----------------------

Exxon Mobil Corporation	\$ 2,758,374
ExxonMobil Foundation*	\$ 11,344,496

Total Higher Education	\$ 14,102,870
-------------------------------	----------------------

Education – Pre-college**Hispanic Scholarship Fund, Gardena, Calif.**

STEM Summit	100,000
-------------	---------

National Engineers Week Foundation, Alexandria, Va.

National Engineering Week	100,000
---------------------------	---------

National Math and Science Initiative Inc., Dallas, Texas

College Readiness Program expansion (\$185 million: 2007-2025)	4,000,000
--	-----------

Rice University, Houston, Texas

Tapia Center: STEM camps	100,000
--------------------------	---------

Teach for All, New York, N.Y. *

International STEM Network	150,000
----------------------------	---------

Contributions Benefiting Communities in the United States	\$ 6,555,350
--	---------------------

Contributions Benefiting Communities outside the United States	\$ 1,790,037
---	---------------------

Total Worldwide Pre-College Contributions	\$ 8,345,387
--	---------------------

Exxon Mobil Corporation	\$ 8,085,387
--------------------------------	---------------------

ExxonMobil Foundation*	\$ 360,000
-------------------------------	-------------------

Total Pre-College	\$ 8,345,387
--------------------------	---------------------

Education – Workforce Development/Other

With its grants, ExxonMobil supports programs to prepare workers for successful careers with local industrial employers. In 2021, ExxonMobil made no individual charitable workforce development grants above \$100,000 to organizations based in the United States.

Contributions Benefiting Communities outside the United States	\$ 5,710,147
Total Worldwide Workforce Development Contributions	\$ 5,710,147
Exxon Mobil Corporation	\$ 5,710,147
ExxonMobil Foundation*	
Total Workforce Development	\$ 5,710,147

Health and Environment

Arizona State University Foundation for a New American University, Tempe, Ariz. *	
Support for collaboration with the University of Guyana	500,000
Battelle – Northwest, Seattle, Wash.	
Global Technology Strategy Program	170,000
Friends of PanAfricare, Washington, D.C. *	
Malaria – Community Based Intervention	250,000
Malaria – Core Angola Community Program	250,000
Malaria – Power Forward: NBA Partnership in Nigeria	500,000
Grassroot Soccer, Hanover, N.H. *	
Malaria – Prevention & Sports Curriculum	600,000
Harvard TH Chan School of Public Health*, Boston, Mass. *	
Harvard Malaria Initiative	100,000
ExxonMobil Malaria Scholar-in-Residence Program	200,000
International Conservation Caucus Foundation, Washington, D.C.	
General support	100,000
JHPIEGO, Baltimore, Md. *	
Malaria in Pregnancy – prevention and treatment	200,000
Massachusetts Institute of Technology, Cambridge, Mass.	
Joint Program on the Science and Policy of Global Change	200,000
National Fish and Wildlife Foundation, Texas and N.M.	
General support	100,000
National Safety Council, Itasca, Ill.	
Robert W. Campbell Award	125,000
Special Olympics, Washington, D.C. *	
Malaria – Prevention Through Sports	100,000
Texas State Aquarium Association, Corpus Christi, Texas *	
Center for Wildlife Rescue, Recovery & Research (\$2 million: 2019-2022)	500,000
United States Agency for International Development, Washington, D.C. *	
Born Free to Shine Initiative	100,000
University of Texas M.D. Anderson Cancer Center, Houston, Texas	
Healthy Community Initiative (\$10 million: 2014-2021)	300,000
Contributions Benefiting Communities in the United States	\$ 2,743,650
Contributions Benefiting Communities outside the United States	\$ 13,004,691
Total Worldwide Health and Environment Contributions	\$ 15,748,341
Exxon Mobil Corporation	\$ 10,758,341
ExxonMobil Foundation*	\$ 4,990,000
Total Health and Environment	\$ 15,748,341

Public Information and Policy Research

American Enterprise Institute for Public Policy Research, Washington, D.C.	
General support	100,000
Bipartisan Policy Center, Inc., Washington, D.C.	
General support	200,000
Brookings Institution, Washington, D.C.	
Corporate Council and Foreign Policy Program	100,000
Center for Strategic and International Studies, Washington, D.C.	
General support	175,000
Securing our Future Capital Campaign (\$5 million: 2015-2021)	500,000
Columbia University, New York, N.Y.	
Center on Global Energy Policy	250,000
Congressional Black Caucus Foundation, Inc., Washington, D.C.	
General support	100,000
Council on Foreign Relations, New York, N.Y.	
Corporate program	100,000
George Washington University, Washington, D.C.	
Regulatory Studies Center	140,000
Massachusetts Institute of Technology, Cambridge, Mass.	
Energy Policy Studies	100,000
Texas 2036, Dallas, Texas	
General support	100,000
Contributions Benefiting Communities in the United States	\$ 3,312,200
Contributions Benefiting Communities outside the United States	\$ 2,800
Total Worldwide Public Policy Contributions	\$ 3,315,000
Exxon Mobil Corporation	\$ 3,315,000
ExxonMobil Foundation*	
Total Public Policy	\$ 3,315,000

Workplace Giving

Local United Way Campaigns – Company and Foundation Contributions

Beaumont & North Jefferson County, Beaumont, Texas*	144,000
Capital Area, Baton Rouge, La.*	100,000
Greater Baytown Area & Chambers County, Baytown, Texas*	270,000
Greater Houston, Houston, Texas*	1,300,000
Greater Houston, Houston, Texas	100,000
Hunterdon County, Flemington, N.J.*	114,000

America's Charities/Employees' Favorite Charities Campaign – Foundation Contributions

Dallas, Texas*	400,000
----------------	---------

Contributions Benefiting Communities in the United States	\$ 2,725,000
Contributions Benefiting Communities outside the United States	\$ 580,000

Total Worldwide Workplace Giving Contributions	\$ 3,305,000
---	---------------------

Exxon Mobil Corporation	\$ 773,400
ExxonMobil Foundation*	\$ 2,531,600

Total Workplace Giving	\$ 3,305,000
-------------------------------	---------------------

Women's Economic Opportunity Initiative

Center for Global Development, Washington, D.C. *	
General support	100,000
Counterpart International, Arlington, Va. *	
Global Women in Management program	500,000
Kopernik Solutions, New York, N.Y. *	
Women's Distribution Network	350,000
Solar Sister, Great Falls, Va. *	
General support	250,000
TechnoServe, Arlington, Va. *	
Access to Markets Initiatives	300,000
WEConnect International, Washington, D.C.	
Women-owned Enterprises Program	250,000
Contributions Benefiting Communities in the United States	
Contributions Benefiting Communities outside the United States	\$ 2,610,000
Total Worldwide Women's Economic Opportunity Contributions	\$ 2,610,000
Exxon Mobil Corporation	\$ 510,000
ExxonMobil Foundation*	\$ 2,100,000
Total Women's Economic Opportunity	\$ 2,610,000

Individual line items have been rounded with the exception of the matching gift programs. May include cash and in-kind contributions to nonprofit and nongovernmental organizations; direct spending on community-serving projects; social bonus projects required under agreements with host governments by Exxon Mobil Corporation, its divisions and affiliates; and, ExxonMobil's share of community expenditures paid by joint ventures operated by other companies.

Line items reflect gross amount contributed; subtotals and totals reflect net giving amounts.

All grants made by Exxon Mobil Corporation, its divisions and affiliates except those indicated by *, which were made by the ExxonMobil Foundation.