

ExxonMobil

2020 Worldwide Contributions and Community Investments

ExxonMobil's community investments are intended to address strategic local priorities where we do business around the world. We partner with governments, other companies and nongovernmental organizations to help support communities where we operate. We focus on community and business needs such as health care, education and economic development, and we consider each community's development goals when deciding how best to invest. We often participate in public-private partnerships and engage with key stakeholders to help improve social and economic conditions.

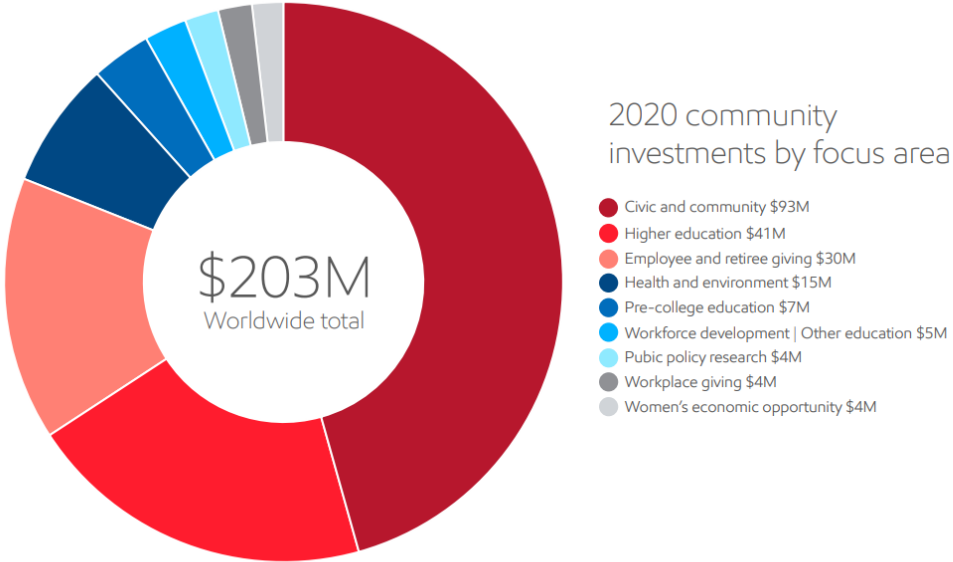
Total contributions include donations from Exxon Mobil Corporation, our divisions and affiliates, and the ExxonMobil Foundation, as well as employee and retiree giving through ExxonMobil's matching gift and employee-giving programs.

In 2020, collectively, Exxon Mobil Corporation, its divisions and affiliates, employees and retirees, and the ExxonMobil Foundation provided \$203 million in contributions worldwide. Of that total, \$63 million supported U.S. communities and \$110 million supported communities in other countries. In addition, ExxonMobil employees and retirees donated \$30 million through ExxonMobil's matching gift and employee-giving programs.

Our employees are involved in local communities by helping build homes, serving as volunteer firefighters and providing pro bono legal services, among numerous other activities. Through company-sponsored volunteer programs, 9,000 ExxonMobil employees, retirees and their families donated more than 200,000 volunteer hours in 2020 to over 2,200 charitable organizations across 16 countries.

This report highlights ExxonMobil's 2020 worldwide corporate contributions and community investments. Organizations in the United States that received grants of \$100,000 or more are listed while investments benefiting countries outside the United States are summarized. The total amounts include all corporate contributions and community investments less than, equal to and greater than \$100,000.

2020 community investments by focus area



Total contributions include donations from Exxon Mobil Corporation, our divisions and affiliates, and the ExxonMobil Foundation, as well as employee and retiree giving through ExxonMobil's matching gift and employee-giving programs. Investments do not include environmental capital and operating expenditures.

Civic and Community

Aera Energy LLC, Bakersfield, Calif.	
Community Funding through Joint-Venture Partnership	803,806
Executive Leadership Council, Washington, D.C.	
National Meeting / General Support	100,000
ExxonMobil Volunteer Involvement Program*	
ExxonMobil Volunteer Involvement Program	3,015,000
Houston Food Bank, Houston, Texas	
COVID-19 Relief	150,000
National Coast Guard Museum Association, Inc., New London, Conn.	
General Support	250,000
National Fish and Wildlife Foundation, Texas and N.M.	
Pecos Watershed Support	100,000
Smithsonian Institution, Washington, D.C.	
Green Book Traveling Exhibition	200,000
Texas Restaurant Association Education Foundation, Austin, Texas	
Houston COVID-19 Relief	100,000
West Texas Food Bank, Midland/Odessa, Texas	
Food Bank Donation	100,000
Contributions Benefiting Communities in the United States	\$ 6,925,508
Contributions Benefiting Communities outside the United States	\$ 85,704,103
Total Worldwide Civic and Community Contributions	\$ 92,629,611
Exxon Mobil Corporation	\$89,410,045
ExxonMobil Foundation*	\$3,219,566
Total Civic	\$ 92,629,611

Education – Higher Education**Educational Matching Gift Program*****ExxonMobil Educational Matching Gift Program****

Auburn University Foundation	643,564
Baylor University	448,225
Brigham Young University	409,962
Bucknell University	244,356
Carnegie Mellon University	180,230
Clemson University Foundation	506,833
Colorado School of Mines Foundation Inc.	292,259
Columbia University	148,325
Cooper Union	148,684
Cornell University Endowed Colleges	383,161
Dartmouth College	152,465
Duke University	190,456
Georgia Tech Foundation Inc.	482,640
Harvard University	212,987
Indiana University	111,585
Iowa State University Foundation	137,300
Johns Hopkins University	109,825
Kansas State University	266,822
Kansas University Endowment Association	464,800
Lamar University Foundation Inc.	309,000
Lee College	145,132
Lehigh University	179,121
Louisiana State University Foundation	1,080,090
Louisiana Tech University	256,500
Massachusetts Institute of Technology	399,161
Mississippi State University	390,207
Missouri University of Science & Technology	102,000
North Carolina State University	141,668
Northwestern University	111,746
Ohio State University Foundation	248,816
Oklahoma State University	750,467
Pennsylvania State University	475,720
Princeton University	216,870
Purdue Foundation	426,000
Rensselaer Polytechnic Institute	112,224
Rice University	1,058,876
Rutgers University	165,468
South Dakota School of Mines and Technology	101,050
Southern Methodist University	111,700
Southern University System	151,825
Stanford University	111,615
Stevens Institute of Technology	178,286
Texas A&M University	2,014,019
Texas Tech University	360,963
Tulane University	304,725
United States Merchant Marine Academy	208,093
United States Military Academy	220,734
University of Alabama	111,294
University of Arizona Foundation	134,182
University of Chicago	124,101
University of Colorado Foundation	157,779
University of Delaware	305,384

University of Florida Foundation	292,405
University of Houston Foundation	870,450
University of Illinois	332,629
University of Kentucky	126,025
University of Michigan Ann Arbor	321,920
University of Minnesota	281,025
University of Mississippi Foundation	180,537
University of Missouri Columbia	109,077
University of Nebraska Foundation	130,625
University of North Carolina - Chapel Hill	136,241
University of Notre Dame	331,286
University of Oklahoma	446,720
University of Pennsylvania	162,750
University of Pittsburgh	119,576
University of Rochester	100,104
University of St. Thomas	122,100
University of Southern California	156,439
University of Tennessee Foundation	274,875
University of Texas at Austin	1,664,260
University of Virginia	203,707
University of Washington	109,500
University of Wisconsin Foundation	202,725
Vanderbilt University	212,675
Villanova University	116,225
Virginia Polytechnic Institute	192,360
Washington University	214,867
Webb Institute	222,750
Worcester Polytechnic Institute	110,107
Yale University	121,267
<u>709 other colleges and universities, each under \$100,000</u>	<u>12,523,822</u>
Subtotal	\$ 37,088,366
Departmental Grants*	
80 colleges and universities	719,000
Hispanic Scholarship Fund, Gardena, Calif.	
STEM Summit	100,000
National Action Council for Minorities in Engineering, Inc.*, Alexandria, Va.	
General Support	100,000
National Engineers Week Foundation, Alexandria, Va.	
National Engineering Week	100,000
Odessa College Foundation, Odessa, Texas	
Bachelor of Arts in Applied Science – Leadership and Management Program	500,000
Society of Women Engineers*, Chicago, Ill.	
Engineering Outreach	100,000
Contributions Benefiting Communities in the United States	\$ 40,027,281
Contributions Benefiting Communities outside the United States	\$ 660,490
Total Worldwide Higher Education Contributions	\$ 40,687,771
Exxon Mobil Corporation	\$ 3,296,290
ExxonMobil Foundation*	\$ 37,391,481
Total Higher Education	\$ 40,687,771

Education – Pre-college

American Geoscience Institute Foundation, Houston, Texas	
K-8 Grade Teacher Leadership Academy	100,000
Carlsbad Municipal Schools, Carlsbad, N.M.	
Internet access for students during COVID-19	100,000
Hispanic Heritage Awards Foundation, Washington, D.C.	
Awards and Latinos on Fast Track (LOFT) Program	100,000
Iditarod Trail Committee, Inc., Wasilla, Alaska	
Iditarod Educational Program	250,000
National Math and Science Initiative Inc., Dallas, Texas	
College Readiness Program Expansion	4,000,000
Rice University, Houston, Texas	
STEM Programs for Students and Teachers	100,000
Southeastern Consortium for Minorities in Engineering, Inc.*, Atlanta, Ga.	
General Support	150,000
Teach for All*, New York, N.Y.	
International STEM Network	400,000
Contributions Benefiting Communities in the United States	\$ 5,759,786
Contributions Benefiting Communities outside the United States	\$ 1,365,730
Total Worldwide Pre-College Contributions	\$ 7,125,516
Exxon Mobil Corporation	\$ 6,539,836
ExxonMobil Foundation*	\$ 585,680
Total Pre-College	\$ 7,125,516

Education – Workforce Development/Other

Below is a summary of global charitable workforce development grants. Individual grants made to organizations in the U.S. were under \$100,000.

Contributions Benefiting Communities in the United States	\$ 147,337
Contributions Benefiting Communities outside the United States	\$ 5,271,820
Total Worldwide Workforce Development Contributions	\$ 5,419,157
Exxon Mobil Corporation	\$ 5,356,820
ExxonMobil Foundation*	\$ 62,337
Total Workforce Development	\$ 5,419,157

Health and Environment

Africare*, Washington, D.C.	
Malaria - Community Based Intervention	250,000
Malaria - Core Angola Community Program	300,000
Malaria - Power Forward: NBA Partnership in Nigeria	500,000
Americans for Oxford*, Inc., New York, N.Y.	
Scholars in Global Health Science	400,000
Battelle – Northwest, Seattle, Wash.	
Global Technology Strategy Program	210,000
Conservation International Foundation, Arlington, Va.	
Alliance for a Resilient Guyana	500,000
Grassroot Soccer*, Inc., Hanover, N.H.	
Malaria - Prevention & Sports Curriculum	600,000
Harvard TH Chan School of Public Health*, Boston, Mass.	
Harvard Malaria Initiative	100,000
ExxonMobil Malaria Scholar-in-Residence Program	200,000
Health Effects Institute, Boston, Mass.	
Ambient Air Health Research	100,000
JHPIEGO*, Baltimore, Md.	
Malaria - Malaria in Pregnancy (MIP)	600,000
Massachusetts Institute of Technology, Cambridge, Mass.	
Joint Program on the Science and Policy of Global Change	200,000
National Safety Council, Itasca, Ill.	
Robert W. Campbell Award	150,000
PATH*, Seattle, Wash.	
Malaria Vaccine Roll-out	150,000
Special Olympics, Inc.*, Washington, D.C.	
Malaria - Prevention Through Sports	250,000
Texas State Aquarium Association*, Corpus Christi, Texas	
Wildlife Rescue and Recovery Center	500,000
UN Environment Programme-World Conservation Monitoring Centre, Cambridge, Mass.	
Proteus Project	108,525
University of Texas M.D. Anderson Cancer Center, Houston, Texas	
Healthy Community Initiative	300,000
Contributions Benefiting Communities in the United States	\$ 3,142,484
Contributions Benefiting Communities outside the United States	\$ 12,128,842
Total Worldwide Health and Environment Contributions	\$ 15,271,326
Exxon Mobil Corporation	\$ 10,780,227
ExxonMobil Foundation*	\$ 4,491,099
Total Health and Environment	\$ 15,271,326

Public Information and Policy Research

American Enterprise Institute for Public Policy Research, Washington, D.C.	
General Support	100,000
Bipartisan Policy Center, Inc., Washington, D.C.	
General Support	200,000
Brookings Institution, Washington, D.C.	
Corporate Council	100,000
Center for Strategic and International Studies, Washington, D.C.	
General Support	175,000
Securing our Future Capital Campaign	500,000
Colorado School of Mines Foundation Inc., Golden, Colo.	
Payne Institute Energy & Development Fund	100,000
Columbia University, New York, N.Y.	
Center on Global Energy Policy	250,000
Congressional Black Caucus Foundation, Inc., Washington, D.C.	
Annual Legislative Conference	100,000
Council on Foreign Relations, Inc., New York, N.Y.	
Corporate Program	100,000
George Washington University, Washington, D.C.	
Regulatory Studies Center	140,000
Massachusetts Institute of Technology, Cambridge, Mass.	
Energy Policy Studies	100,000
Tax Foundation, Washington, D.C.	
General Support	200,000
U.S. Chamber of Commerce Foundation, Washington, D.C.	
Capital Campaign	250,000
Contributions Benefiting Communities in the United States	\$ 3,819,975
Contributions Benefiting Communities outside the United States	\$ 41,620
Total Worldwide Public Policy Contributions	\$ 3,861,595
Exxon Mobil Corporation	\$ 3,861,595
ExxonMobil Foundation*	\$ 0
Total Public Policy	\$ 3,861,595

Workplace Giving

Local United Way Campaigns – Company Contributions

Beaumont & North Jefferson County, Beaumont, Texas	160,000
Greater Baytown Area & Chambers County, Baytown, Texas	290,000
Greater Houston, Houston, Texas	1,600,000
Hunterdon County, Flemington, N.J.	114,000

America’s Charities/Employees’ Favorite Charities Campaign – Company Contributions

Dallas, Texas	500,000
---------------	---------

Contributions Benefiting Communities in the United States	\$ 3,439,015
Contributions Benefiting Communities outside the United States	\$ 613,000

Total Worldwide Workplace Giving Contributions	\$ 4,052,015
---	---------------------

Exxon Mobil Corporation	\$ 4,052,015
ExxonMobil Foundation*	\$ 0

Total Workplace Giving	\$ 4,052,015
-------------------------------	---------------------

Women's Economic Opportunity Initiative

Center for Global Development*, Washington, D.C.	200,000
Impact Evaluation and Research	
Counterpart International*, Inc., Arlington, Va.	500,000
Global Women in Management	
KickStart*, San Francisco, Calif.	400,000
Money Maker Irrigation Pump	
Kopernik Solutions*, New York, N.Y.	350,000
Women's Distribution Network	
Opportunity International*, Chicago, Ill.	300,000
Integrated Agriculture Program	
Solar Sister Inc.*, Great Falls, Va.	250,000
Sustainable Development	
TechnoServe Inc.*, Arlington, Va.	500,000
Access to Markets	
WEConnect International Inc., Washington, D.C.	250,000
Women-Owned Enterprises	
Women's World Banking, New York, N.Y.	100,000
SheCounts	
Contributions Benefiting Communities in the United States	\$ 60,000
Contributions Benefiting Communities outside the United States	\$ 3,600,000
Total Worldwide Women's Economic Opportunity Contributions	\$ 3,660,000
Exxon Mobil Corporation	\$ 510,000
ExxonMobil Foundation*	\$ 3,150,000
Total Women's Economic Opportunity	\$ 3,660,000

Individual line items have been rounded with the exception of the matching gift programs. May include cash and in-kind contributions to nonprofit and non-governmental organizations; direct spending on community-serving projects; social bonus projects required under agreements with host governments by Exxon Mobil Corporation, its divisions or affiliates; and, ExxonMobil's share of community expenditures paid by joint ventures operated by other companies.

All grants made by Exxon Mobil Corporation, its divisions or affiliates except those indicated by *, which were made by the ExxonMobil Foundation.